

*In this
issue:*

Page 1

Refurbishment of Filter
Press No. 2 at
CCSTWs

Page 2

Refurbishment Works
of Filte Press No. 2 at
Cheung Chau STWs

Refurbishment of Filter Press No. 2 at Cheng Chau Sewage Treatment Plant

It was a great challenge in 2020, due to the Covid-19 pandemic , the work progress was very much affected , work activities being slowed down, logistics was suspended for two months. The refurbishment works was taken place at Cheung Chau island , with all of the workers retained in the outlying island to avoid from often travelling around in the city thus minimising any potential risk.



The filter press machine has been running since 1997 , after 23 years, it was rebuild with all new components leaving only the bare frame at the plant, repolished with heavy epoxy coating. It resumed the same performance as alike the new one.

Enviro Process

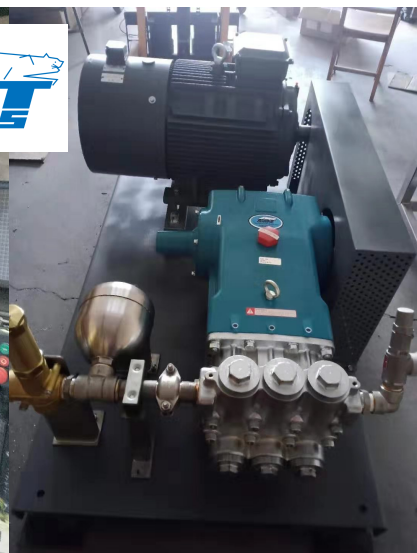
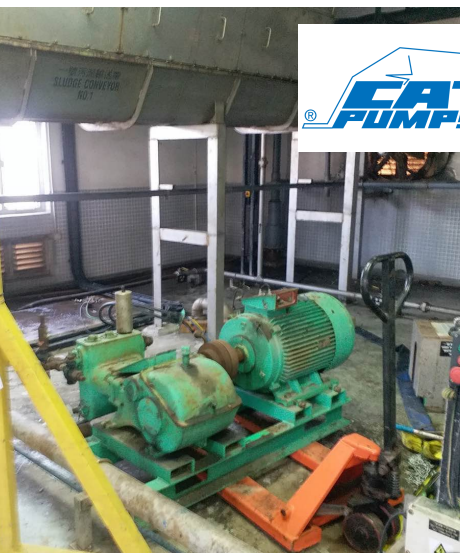


The hydraulic system is completely replaced by a new hydraulic oil reservoir , new IE3 premium efficiency electrical hydraulic pack and a new double acting hydraulic cylinder .

Hydraulic parts are supplied by famous international brands, Parker, Yuken , Siemens drive to assure the quality is maintained.

All membrane filter plates are replaced by new Klinkau (Germany) empty chamber membrane plates. This allows an empty chamber filling and no distortion at uneven filling of sludge . Plates are membrane squeezed to 16 bar standard, though a higher pressure to 20bar is allowed.

Enviro Process
New separator



(Retrofitting Klinkau Overhanging Membrane Filter Plate)

採用德國Klinkau GmbH 優質組件專業製造生產。

於市政污水處理廠、工業廢水處理各領域均已取得滿意成果。全套設計方案包括生產設備工地安裝並實地調試一體化為客戶提供全方位優質服務。

全自動化設備省卻客戶操作運行成本、高節能電機更能進一步減少營運成本。

The old cloth wash high pressure pump is replaced by USA Cat Pump, high cloth wash performance is maintained as normal.

Two (2) New Ingersoll Rand membrane squeezing compressors are replaced to maintain the membrane squeezing pressure at 16 bar max.

IR Ingersoll Rand
Inspiring Progress™

BEST QUALITY
MADE IN GERMANY