



# TECHNICAL SPECIFICATION

Bulletin : AIE-ERV-013  
 Effective : Oct. 11, 2002  
 Supersedes : Sept. 12, 2002  
 Dated :

ARCTIC INDIA ENGINEERING PVT. LTD.

ARCTIC INDIA HOUSE, 20, RAJPUR ROAD, DELHI - 110054 (INDIA)

PHONE : 91-11-23912800 FAX: 91-11-23915127

E-MAIL: enquire@pahwa.com

## ENERGY RECOVERY VENTILATOR ERV-250/500

### ERV-250/500 CABINET-STYLE ENERGY RECOVERY VENTILATOR

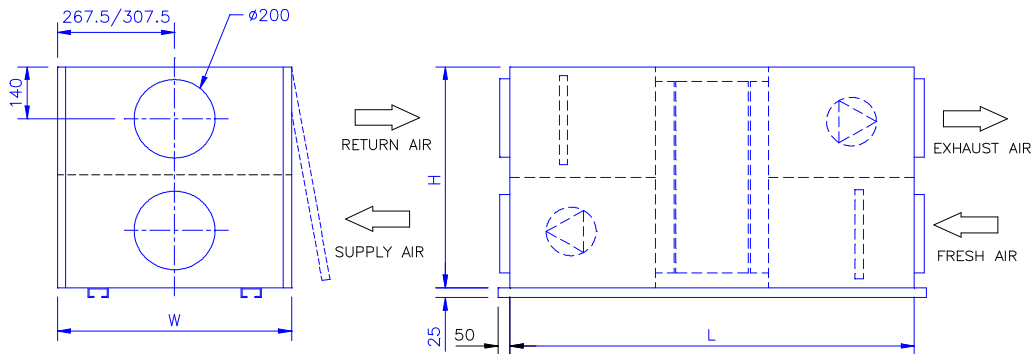
ALL ERV-250/500 UNIVERSAL MOUNT, CABINET-STYLE ENERGY RECOVERY VENTILATORS COME STANDARD WITH :

- CNC MANUFACTURED 20 GAUGE POWDER COATED CABINET WITH 16 GAUGE FRAME
- SIEMENS GREY FINISH.
- MOLECULAR SIEVE COATED ALUMINIUM, "ECOFRESH". TOTAL ENERGY RECOVERY WHEEL.
- COMPACT BACKWARD CURVED RADIAL FANS WITH EXTERNAL ROTOR MOTOR.
- CASING INSULATED WITH 19mm CLOSED CELLS, HIGH DENSITY INSULATION TO PREVENT CONDENSATION OF MOISTURE ON EXTERIORS OR INTERIORS OF THE UNIT.
- LARGE PANEL OPENING FOR EASY ACCESS TO FILTERS, AND INSPECTION OF OTHER COMPONENTS.
- REMOTE START/STOP WITH 1.25 MTR.LONG CABLE.
- 200mm DIA. METALLIC COLLARS FOR DUCT CONNECTIONS.
- REMOVABLE, WASHABLE SYNTHETIC PRE FILTERS.
- FACTORY SET INBUILT PURGE.
- FEATHER TOUCH BRUSH SEALS MINIMIZE CROSS CONTAMINATION & ENSURE LONG LIFE.

### SPECIFICATION SHEET FOR ERV-250/500

MODEL	SUPPLY AIR FLOW CMH	DUCT CONNECTION IN mm	EXHAUST AIR FLOW CMH	DUCT CONNECTION IN mm	SUPPLY BLOWER WATT	EXHAUST BLOWER WATT	BED DRIVE MOTOR WATT	NOISE LEVEL (dbA)	DIMENSIONS IN MM (EXCLUDING BASE FRAME)			APPROX. SHIPPING WT. IN KG.	AC POWER SOURCE	EFFICIENCY
									L	W	H			
ERV-250	250	200	250	200	85	85	25	45*	850	535	560	65	230V/1Ph/50Hz	> 65
ERV-500	500	200	500	200	85	85	25	45*	950	615	560	75	230V/1Ph/50Hz	> 65

\*MEASURED AT 3 METRS. DISTANCE (AT 90 DEGREES), WHEN UNIT IS DUCTED.



### OPTION AVAILABILITY

ECONOMISER	ON REQUEST
SENSIBLE RECOVERY	AVAILABLE
VARIABLE SPEED CONTROLLER	ON REQUEST
ALUMINIUM FILTERS	AVAILABLE
CO2 MONITOR	AVAILABLE
OUTLET DUCT GRILLS	AVAILABLE



# TECHNICAL SPECIFICATION

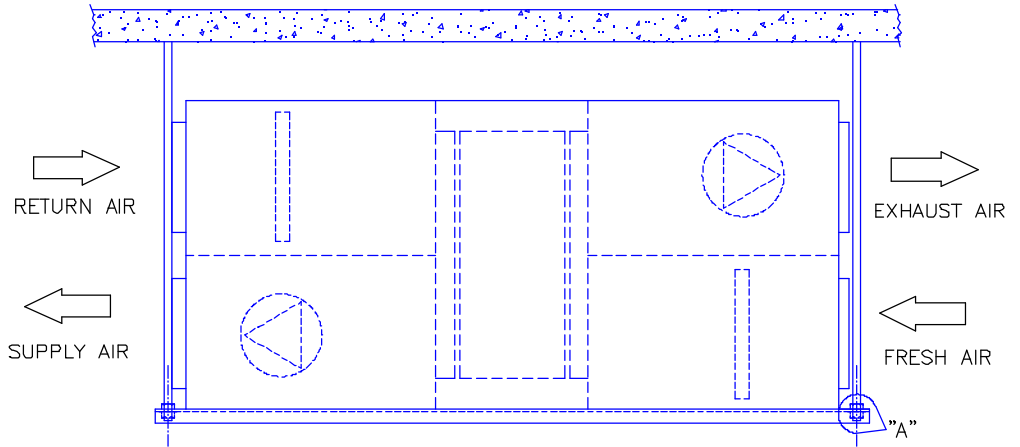
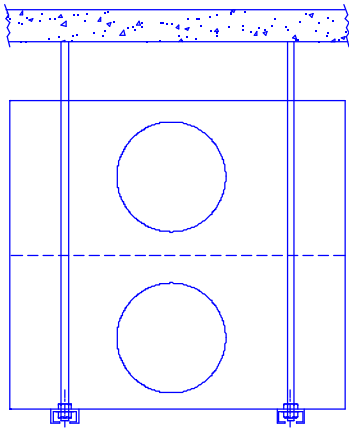
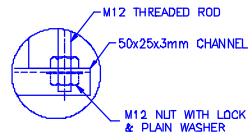
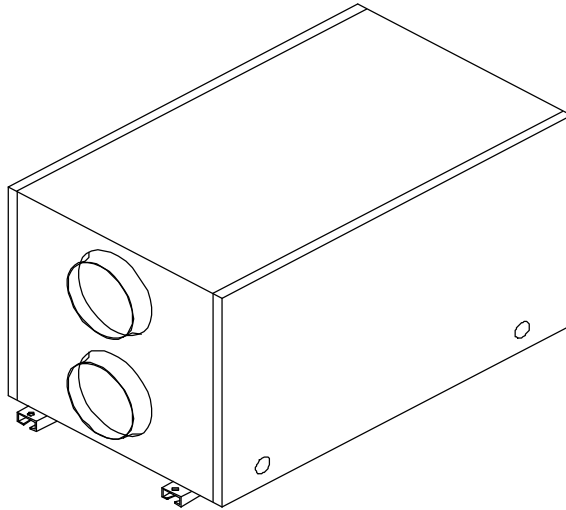
ARCTIC INDIA ENGINEERING PVT. LTD.

ARCTIC INDIA HOUSE, 20, RAJPUR ROAD, DELHI - 110054 (INDIA)

PHONE : 91-11-23912800 FAX: 91-11-23915127

E-MAIL: enquire@pahwa.com

## UNIT MOUNTING DETAIL



ALL DATA SUBJECT TO CHANGE WITHOUT NOTICE

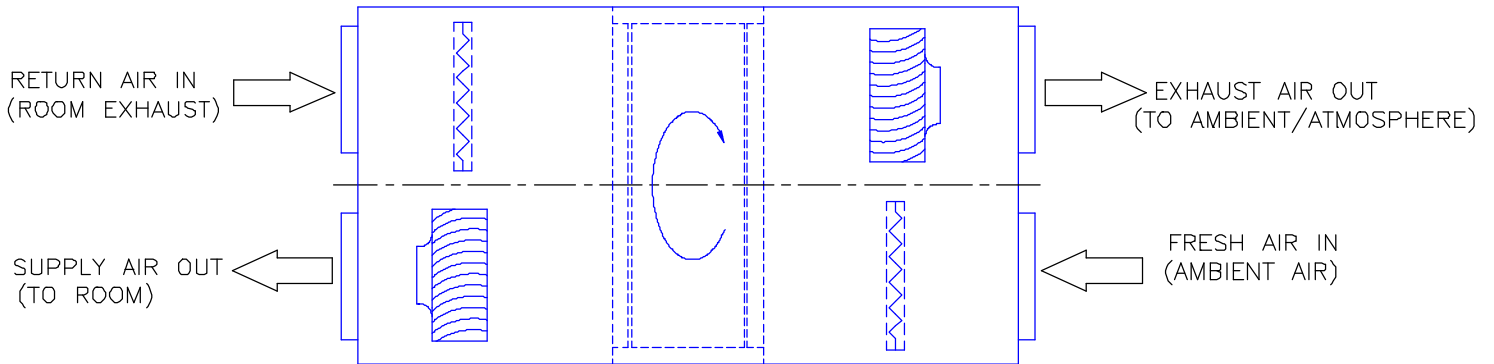




# TECHNICAL SPECIFICATION

**ARCTIC INDIA ENGINEERING PVT. LTD.**  
ARCTIC INDIA HOUSE, 20, RAJPUR ROAD, DELHI - 110054 (INDIA)  
PHONE : 91-11-23912800 FAX: 91-11-23915127  
E-MAIL: enquire@pahwa.com

## SYSTEM FLOW DIAGRAM



**ALL DATA SUBJECT TO CHANGE WITHOUT NOTICE**

